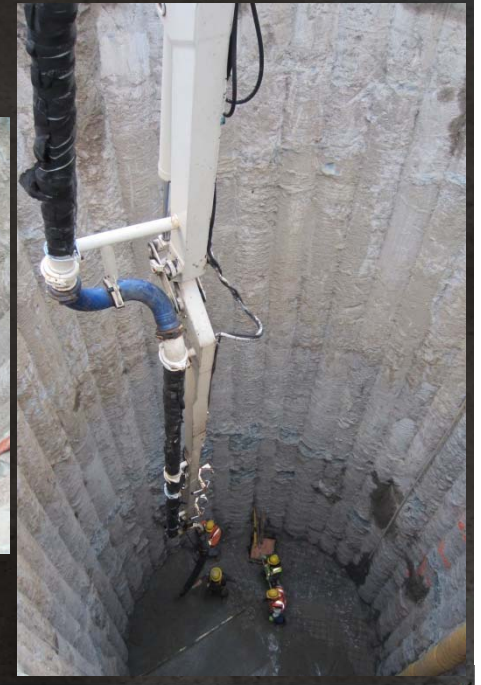


SECANT PILES



Secant Piles are constructed by drilling and concreting intersecting circular piles. Reinforcement of the piles can be achieved using either structural steel members or reinforcing steel cages.

Secant piles are commonly used as support for deep excavations and provide a barrier against seepage migration into the excavation. Secant piles offer a flexible solution for sealed shafts and a viable solution to traditional pile and lagging shoring.

They can be designed as free standing system or in some cases be tied back with the use of anchors.

Our Front of Wall system provides the most flexibility and allows us to place the piles in close proximity to existing structures. It provides a fully cased hole ensuring verticality of the piles.

- ▲ Secant piles in excess of 32" (750 mm) in diameter.
- ▲ Secant piles to depths exceeding 80 feet (25 m) deep.



Advanced Construction Techniques
Toll Free 1-877-373-7248
www.agtgroup.com

Providing innovative design-build seepage and ground modification solutions for more than 20 Years